

LR10M大容量冷冻离心机

LR10M Large-capacity Refrigerated centrifuge

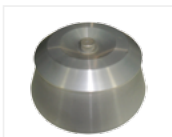
特性

- 大力矩交流变频电机，无污染，延长使用寿命。
- 进口变频驱动系统，智能控制系统，保证工作平稳可靠。
- 设有超温、超速、电子门锁、不平衡等多种保护
- 智能界面，TFT真彩大屏幕触摸液晶显示、微机控制，同步显示设定参数和运行参数。
- 用户可设定16个运行程序，可随时修改运行转子的控制参数。
- 可编程操作，10档升降速时间供用户任意设定。
- 可显示转速上升、下降曲线、离心积分曲线、温度曲线。

Features

- AV motor of variable frequency and high torque, free from contamination caused by carbon dust, which helps to prolong the service life.
- Imported variable frequency drive system and automatic control system to ensure steady and reliable operation.
- Multiple protections such as overheat, hypervelocity, electronic locking and imbalance.
- Intelligent interface featured by a TFT true-color LCD wide-screen touch monitor, micro-computer control and simultaneous indication of both the set parameters and operation one.
- With 16 operation programs to be set by the user and the control parameters of the rotor to be modified at any time.
- Operations can be programmed, 10 levels of speed-up and speed-down time limits for the user to choose freely.
- Can indicate the ascending and declining curves of the rotor, the centrifugal integral curves and the temperature curves.

可选配件 Optional fittings



6 × 1000ml



6 × 300ml



6 × 500ml



6 × 1000ml



技术参数 Specification

型号 Model	LR10M
最大容量 Max Capacity	6 × 1000ml
最高转速 Max Speed (r/min)	10000 r/min
最大离心力 Max RCF (×g)	18300 × g
转速精度 Speed precision	± 50r/min
控制及驱动系统 Control and driven system	交流变频电机，微机控制，直接驱动 Frequency motor, micro control, direct driver
制冷系统 Refrigeration system	进口压缩机组、无氟制冷剂 (R404a) Import fluoride-free compressor and control valve (R404a)
运行程序 Operation programe	16个sets
温控范围 Temp.control range	-20℃ ~ +40℃
温控精度 Temp.precision	± 1℃
定时范围 Timer range	0-99h59min
总功率 Total power	5.7KW
电源 Power	AC220V 50Hz
噪音 Noise	< 68dB (A)
外形尺寸 Dimension (L × W × H)	840 × 730 × 950mm
重量 Weight	280kg

转子名称 Model	容量 Capacity	转速 Speed	离心力 RCF
角转子 Angle rotor	6 × 300ml	10000	18300
	6 × 500ml	8000	11800
	6 × 1000ml	7000	11500
水平转子 Swing rotor	6 × 1000ml	4200	5100